

# Older cat health checks

For cats aged 7 years and over

Cat and Owner name \_\_\_\_\_

Age \_\_\_\_\_ Breed \_\_\_\_\_

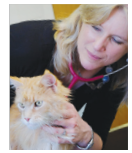
Gender and neuter status \_\_\_\_\_

AFFIX STICKER

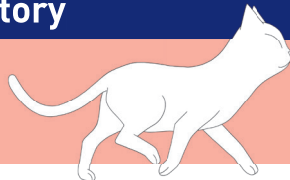
DATE: \_\_\_\_\_

Courtesy of Dr Sarah Caney

BVSc PhD DSAM(Feline) MRCVS and CEO of  
Vet Professionals, [www.vetprofessionals.com](http://www.vetprofessionals.com)



## Clinical History



Let the cat explore and settle in the room while you take the history so they are relaxed ahead of the BP measurement.

Does the owner have any concerns? \_\_\_\_\_

Have you noticed any change in your cat's...	Yes	No	Not sure	Comments
.... thirst/appetite/eating?				
.... weight/body condition?				
.... behaviour/energy levels? E.g.				
Grumpy or less happy around people				
Interacting less or less active				
Sleeping in unusual places				
Not coming upstairs				
Toileting in unusual places				
Purring less				
.... mobility or agility?				
Have there been any changes in cat's ability or enthusiasm to do normal tasks?				
Go up/down stairs				
Use catflap				
Jump on/off things				
Play				
Scratching				
Has the following been noticed?				
A stiff gait				
A limp				
Vocalisation or hissing when moving or being stroked over joints				



Have you noticed any change in your cat's...	Yes	No	Not sure	Comments
.... urination or defecation?				
.... grooming/coat condition/claws?				
.... breathing?				
.... eyes?				
.... ears, nose, mouth (breath smell)?				
.... anything else?				

## Clinical Assessment

General mobility in the consulting room: \_\_\_\_\_

General demeanour and attitude (normal/subdued)? \_\_\_\_\_

## Systolic Blood Pressure Measurement (SBP)

Systolic Blood Pressure:

mmHg	mmHg	mmHg	mmHg	mmHg	mmHg	mmHg
------	------	------	------	------	------	------

Mean systolic blood pressure mmHg	Cuff size	Cuff position Forelimb Hindlimb Tail R L	Method of blood pressure assessment Doppler Oscillometric PetMAP	Cat position Sitting Standing Lying
--------------------------------------	-----------	--	--	---



Take SBP reading first, before any 'hands-on' examination, after giving the cat 5-10 minutes to acclimatise during the history taking. Use the mean of 5-7 readings.

## Weight

Weight:

Kg
----

% weight change:

Example:  
A cat was 5.1 kg at last check and today weighs 4.8 kg.  
% weight change =  $[(5.1 - 4.8) \div 5.1] \times 100\% = 5.9\%$

% weight change = (difference in today and last time's weight) divided by (last time's weight) x 100

Body Condition Score:

Record using a 5 or 9 point scale
-----------------------------------